

PITA NEWSLETTER

Sponsored by the Plum Island Taxpayers and Associates, Inc.

Bringing Plum Island Together

www.plumislandtaxpayers.org

Summer 2023 Issue 1



BEFORE TUNA FISHING WAS "WICKED"

Written by Lee and Bob Yeomans
(Project Coordinators)

There are some fascinating, scary yarns lurking in the depths of the waters off of Plum Island. Some of these true stories are almost unbelievable until you sit and listen to the fishermen who experienced these hard and dangerously difficult times. I'm speaking of hand-line tuna fishing - men against very large tuna, fishing from every size boat imaginable, some too small to capture the fish they targeted.

Before tuna fishing was considered "wicked", it was more perilous, more challenging and very addicting. Yes, there was the thrill of the catch, but when the boats were loading up with bait, fuel and food, there was always the quiet anticipation of what lay ahead. Would the weather cooperate? Will the seas be calm, but not too calm? What about those tides? And...where is our mate?? Did we forget the tape for the Si-Tex fish finder again??? And, oh man, does that bait stink!!



This is a picture of Bob and Harold Packer who caught these 2 giants on handlines - they dragged the fish up the beach at Plum Island Point.

so that it would uncoil without too much effort. One end of this pot warp had a loop to attach a Norwegian ball to in the event the fish was taking more line out than the crew could get back into the basket. Attached to the end of the pot

Tuna continued on page 2



Once underway, all of the above concerns were a thing of the past as we steamed out through the mouth of the Merrimack River and made our way towards the fishing grounds. Everyone on board had a task to perform throughout the day. There were no rods and reels on board - only small milk crates - even laundry baskets - with pot warp carefully placed

JOIN PITA BUYERS' GROUP NOW FOR TOWNSEND FUEL DISCOUNTS

PITA has a Buyers' Group for fixed rate discount pricing with Townsend Energy for both propane and heating oil for PITA members. Although we don't yet have rates for the coming contract period, PITA is currently negotiating with Townsend for the best rates possible.

Our previously negotiated propane rate (fixed for 2 years from July 1, 2021 to July 1, 2023), was \$1.93 per

INSIDE THIS ISSUE

BEFORE TUNA FISHING WAS WICKED BY LEE YEOMANS PG. 1

PITA BUYERS' GROUP AND TOWNSEND FUEL DISCOUNTS PG. 1

PITA HOSTS NEWBURY COUNCIL ON AGING PG. 4

RESERVATION TERRACE AND RIVER DREDGING PROJECT UPDATE PG. 5

ARTIST SPOTLIGHT IMPERMANENT ART BY SANDRA TURNER PG. 6

NEW LAW FOR CSO ALERTS PG. 6

PLUMFEST 2023 PG. 7

PLUM ISLAND LIGHT UPDATE PG. 8

PLUM ISLAND POINT GAZEBO DEMOLITION PG. 9

PLUM ISLAND PUBLIC BATHROOMS UPDATE PG. 10

EVENTS

PLUMFEST FUNDRAISER JUNE 11
3-7 P.M. AT THE BEACHCOMA

PLUMFEST 2023 ON SEPTEMBER 16
FROM 12-6 P.M.

PROPANE DISCOUNT DEADLINE
JULY 1ST

gallon for 100+ gallons per household consumption (\$3.70 per gallon for less than 100 gallons consumption). These prices are with no extra fees, no rental fee, and no delivery fee. PITA was lucky to lock in this low price last time, and we are doing our best to get another great price for the new 2-year contract period beginning July 1, 2023.

The previous heating oil rate (fixed for 1 year for the 2022-23) heating season was \$4.29 per gallon. PITA hopes to get a better rate for the new contract period.

Townsend requires PITA members to join or renew before July 1, 2023 to be eligible for the PITA Buyers' Group negotiated

TOWNSEND continued on page 3

Tuna continued

warp was dyed 1/4 inch nylon (very hard on the hands) - followed by hard-wire stainless steel leaders, coffee colored cable and ending in very large Mustad hooks.

Once these fishermen settled on their "spot", attempts were made to catch some live bait. At the same time 3 or more lines were put over with whatever whole, dead fish looked best. The rest of the bait was cut up for chum - then carefully tossed overboard in a nice, steady manner to create a chum line to lure the tuna towards the baited hooks.



The waiting game began once all the lines were in, the Si-Tex marked any fish in the area, the chum was continuously cut and tossed and the excitement in the air was as thick sometimes as the fog surrounding the boat. And...it was now time for breakfast!

The pot warp was secured to the boat with cod line - strong enough to keep the line secure, but light enough to SNAP when a fish hit. And SNAP it did. This sound created a chaotic fire drill type of situation while everyone swiftly went to their assigned stations - gloves on - setting the hook, hauling in the other lines, letting the anchor go, clearing the deck... and coiling any outgoing lines back into the basket. Someone always

had a knife handy... just in case.

These giant Bluefin tuna were truly giants - some reaching 1000+ pounds. They were strong AND fast - the only thing between them and their freedom was a bunch of fishing line hand-held by whoever still had the strength to hold on and pull hard in an attempt to tire out the fish. The harpoon was ready for when the fish was closer to the boat.

All of that might sound simple enough, but when you hear some of the stories - some quite harrowing, some hilarious, and most pretty true and accurate, you will understand why we feel it is so important to preserve these stories of a method of fishing back in the day. Fishing for tuna will never be done in this manner again.

We think these stories will eventually be made into an extraordinary documentary. The world can't seem to get enough of "Wicked Tuna", and the true stories behind "Before Tuna Fishing was Wicked" are sure to capture a lot of attention.

What started out as a meeting of the minds organized by Jenn Bogard at the Custom House Maritime Museum has grown into a project that includes marine researcher, Jon Johansen, who is in the process of interviewing some of these fishermen - some as old as 92.

The University of New Hampshire has jumped on board and will have a team working on this project including a professional videographer.

And to think the first meeting with fishermen took place right here at PITA Hall (thanks to Ron Barrett", President of PITA) -- a very appropriate beginning to this project.

Stay tuned as this historical endeavor unfolds. We will feature ongoing articles in future issues.

PITA Board of Directors

Ron Barrett, President

Jerry Klima, Vice President

Frank Pierce, Treasurer, Hall Mgr.

Kevin Byrne, Secretary

Ron Perkins, Director

Maureen Trout, Director

Susan Grillo, Director, Membership and newsletter editor

Lee Lane, Director

Kincade Webb, Membership

PITA MEMBERSHIP Join or renew for '23

It's our Spring membership drive and we really appreciate your support! We are asking for renewals for 2023 to continue our efforts and we welcome new members!

See the President's Letter and Membership Form on our web site at www.plumislandtaxpayers.org

The 2023 membership fee is only \$35/year individual or \$50/year for a family.

Now you can conveniently renew your membership or join online - via PayPal - just click the link "Join PITA online" on our website. You can also print out the Membership Form and mail it back to PITA with your paper check payment.



INSTITUTION FOR SAVINGS

BUILDING STRONGER COMMUNITIES TOGETHER SINCE 1820.

Main Office: 93 State Street, P.O. Box 510, Newburyport, MA 01950

978-462-3106 Fax 978-462-1980

24-Hour Automated Telephone Banking

Toll Free 800-437-6703



BARRETT TRANSPORTATION

Newbury, MA

Ron Barrett

Tel: 978-462-8579

Cell: 508-641-1500

Townsend continued

prices for a new contract period. The more members we have, the better negotiating power we have, so please consider joining if you haven't already.

All PITA members, can join the PITA Buyers' Group for propane or oil, or both, regardless of who your service provider is today. However, PITA currently has negotiated pricing only with Townsend and, to get these rates, you must switch to Townsend as your provider.

Also, for propane, you must have a Townsend tank. There is no charge for the new Townsend propane tank, provided your tank site location is in compliance with existing regulations. You may have a fee from your current alternative propane provider to remove their tank if you decide to make the switch to Townsend. For oil, you do not need to switch to a new oil tank, but Townsend must inspect your existing oil tank for safety compliance before they will fill it.

Interested???

Not a PITA member yet?

Forgot to renew?

No problem.

JUST FOLLOW THESE SIMPLE STEPS:

1. Join PITA now or renew online or by mail. Visit our website www.plumislandtaxpayers.org for more information or fill out the attached PITA Membership Application and mail it in with your membership fee (\$35/individual or \$50/family).
2. Contact Kevin Anderson at Townsend kanderson@townsendtotalenergy.com to get on the PITA Buyers' Group list for Propane and/or Oil.
3. Email our PITA Townsend liaison, Diane Barrett at diron@comcast.net to let her know you are now part of the PITA Buyers' Group.
4. Watch for more info this Summer about Townsend's propane and oil prices and the sign-up deadlines. If you don't like the Townsend prices, you don't have to change providers, but PITA only has a contract with Townsend for group discount pricing.

Still have questions? Contact Diane at diron@comcast.net for more information and she will help you through the process.



Blue Ribbon Water

Bill Cooper

bill.cooper@blueribbonwater.com

Mobil: 978-992-8172

Direct: 978-993-4355

blueribbonwater.com

"Bringing Cleaner, Healthier, Local Water to Every Faucet"



5 Market Square Suite B3
Amesbury, MA 01913

pferragamo@fishwindowcleaning.com
www.fishwindowcleaning.com/3050
Commercial and Residential • Independently Owned & Operated

Phil Ferragamo
General Manager
(978) 834-6239

FISH OFFERS A 10% DISCOUNT FOR PITA MEMBERS



Fully Licensed &
Insured Professional
**EXTERIOR
CLEANING**
Northeast MA

Owen Roberts
617-820-4382
thesoakpw@gmail.com



**Newburyport
Bank**

JOURNEY WELL

PITA HOSTS NEWBURY COUNCIL ON AGING

Newbury's Council on Aging (COA) Mission Statement is "Together we empower, enhance, and enrich the lives of our seniors." In addition to being a resource to Newbury seniors (and their families and caregivers), the COA provides ongoing information, referral to the local and state network of elder services, and health, recreational, and educational activities. This includes several transportation options (the COA van, the NEET program, and the Merrimack Valley Transit Authority's Ring and Ride), weekly shopping trips, classes, presentations, game nights, blood pressure clinics, coffee hours, Traveling Chef meals, holiday luncheons, and excursions. The COA publishes a bi-monthly newsletter with a calendar of events and activities. This newsletter is mailed out to folks in town, posted on the COA website, and is also available for pick up at the COA, Town Clerk's Office, and the Newbury Town Library. Would you like to receive the newsletter? Give the COA a call and they will add you to their mailing (or email) list.

PITA Hall is proud to be the host site for the COA holiday luncheons, which are well attended and loads of fun with good food and entertainment. Many seniors who participate are Plum Island residents so the Hall provides a very convenient location for them. The COA staff is very grateful for the collaboration with PITA Hall.

The enthusiastic and knowledgeable primary COA Team includes:

Cindy Currier, Director
Kathy Zaremba, Program Coordinator
Janet DelMare, Outreach Coordinator

You can reach out to any of them directly via the COA contact information below:

The COA office is located in the Newbury Municipal Offices at 12 Kent Way, Suite 100, Byfield. They are the first door to the right when you enter the building. You can contact the team there in person or by calling 978-462-8114 or emailing coa@townofnewbury.org. Please note the COA office hours are Monday, Wednesday, and Thursday 8am-4pm; Tuesday 8am-7pm. The office is closed on Fridays. The COA website is <https://www.townofnewbury.org/council-aging>. Also, the COA has a new Facebook page to share information about upcoming events as well as to showcase what they have been doing. View their Facebook page here: <https://www.facebook.com/profile.php?id=100091220526221>. Please like and share their posts to help get the word out about what is going on at your Council on Aging!

The Newbury Council on Aging is looking for new members to join. This is an all-volunteer committee that meets once a month. The Director

keeps the Council abreast of the happenings of the program and the members advise as well as provide support and feedback to the Director about the direction of the program. If you are interested in serving on the Council on Aging (which, per the bylaw, is allowed nine members), please send a letter of interest to the Newbury Select Board, 12 Kent Way, Byfield, MA 01922.

If you would like to make a donation to help support the mission of the Newbury Council on Aging, you may send a check (made payable to Newbury Council on Aging) to 12 Kent Way Suite 100 Byfield, MA 01922. Many thanks for your support!



Candy L. Way



Fine Artist
Studio - Gallery
Ipswich, MA
(978) 420-5206

candyway@comcast.net
<http://candywayfineart.com>



LOMBARDI

ENERGY SERVICES

Delivering Comfort to Our Community

Service ★ Installation ★ Fuel

LombardiEnergy.com

978.465.7200

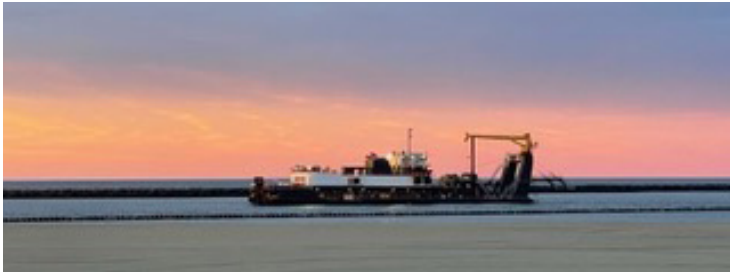


A cleaner, greener fuel

RESERVATION TERRACE AND RIVER DREDGING PROJECT UPDATE

Written by Lela Lischke Wright and Susan Grillo

Life along Reservation Terrace has been anything but dull. For the 1st time in 3 years, this neighborhood can stop watching the rising tide and breathe a bit easier! Over the past 5 years we have become accustomed to our ever-changing landscape: once dunes covered in seagrass (2018), then giant mounds of sacrificial sand (2019), rows of concrete blocks (2020), heaps of tattered supersacks (2021), boulders along the water's edge (2022), and today it has become a HUGE Beach! Thanks in part to the Norfolk Dredging Company and the super-sized (365') dredger built in 2022, the Delaware!



This past October we were relieved to see the arrival of H&L Dredge team. They were able to place about 10,000 cubic yards of sand on the beach that month. Unfortunately, they were unable to complete the project on their own and yet found a company that could. However, the clock was ticking down with only weeks to complete before Piping Plover season was upon us. They would need an extension to finish the job. With the help of Coral Siligato (project manager for the United States Army Corps of Engineers -- USACE) and our legislators, a 30-day extension was granted through the end of April. The Delaware arrived on March 23rd and started pumping sand onto the beach the evening of March 28th. One week later, working around the clock, they were done! Local politicians including Senator Bruce Tarr, Mayor Sean Reardon, City Councilors Mark Wright and Sharif Zeid, and PITA's President Ronny Barrett were invited aboard the Delaware for a tour and to meet the dedicated crew. By Easter weekend, a total of over 214,000 cubic yards of sand were placed to rebuild the beach along the river at Reservation Terrace.



While everyone agrees that it is a relief to see the river so far away, we are keenly aware that this sand will be swept away over time. The dredging was necessary to keep the channel open, and after 12 years it was well overdue. The sand could have been placed somewhere offshore, but fortunately for Plum Island, it was available to be used here instead.

There is currently a study being done to best determine a permanent solution to the problematic gyre created by the jetty repair almost 10 years ago. Unfortunately, this is not an imminent project for the USACE. It will take some time for necessary approvals and funding. We can only hope it is not too far off.

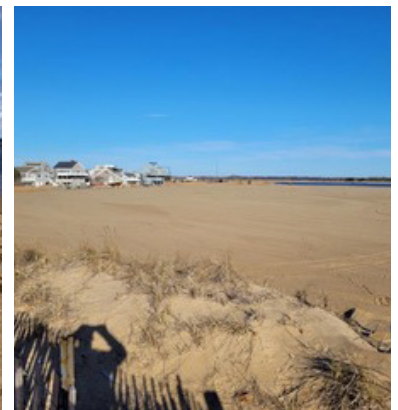
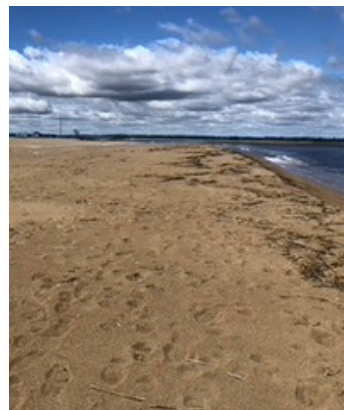
The Merrimack River Beach Alliance (MRBA) meetings at PITA Hall have been instrumental in providing a table for these discussions and a forum to allow residents voices to be heard. Many thanks to Senator Bruce Tarr for chairing these meetings and making all of this possible!

As of the April 21st MRBA meeting, the next action steps include:

- planting beach grass to secure the sand (this has now been completed by Gregg Moore from University of New Hampshire and his Team of students along with several local volunteers)
- conducting a study on the impact of the spur is being discussed
- holding a public meeting at PITA to obtain community input. (Update: Valerie Coolidge of Senator Tarr's office chaired this meeting on May 10th. She took notes and prepared a report for USACE to review as they are actively working on a model to optimize the design of the jetty and adjacent spur.)

Thanks to Lela Lischke Wright of 55 Reservation Terrace for keeping a close watch over the neighborhood and for sharing her personal contributions to this ongoing story. Also, many thanks to the Chairors family business (Captains Fishing Charters) for their continued support and assistance with sand remediation at Plum Island Point.

For details on the dredging project, visit the City of Newburyport webpage at <https://cityofnewburyport.com/planning-development/harbor-dredging-project>.



ARTIST SPOTLIGHT: IMPERMANENT ART

Written by Sandra Turner

He felt the sand shift as his booted foot made its way across the beach. Quite a different feeling than walking barefoot in the warm sand of his idyllic childhood days of roaming the shores of Plum Island.



This day was different as beyond the usual sounds of the ocean and the seagulls flying overhead, the cries of "Papa" from his two sons, broke through.

Scattered across the expanse of low tide, a plethora of debris brought up by a recent storm raised the level of excitement in their voices as they ran, gathering up the treasures they found. In their minds it was all the wreckage form a pirate's ship that had washed up, and each branch and strip of wood was worth its weight in gold.

As his hands reached down to pick up a worn slat from an old snow fence, his thoughts wandered back to days he shared the same beach with his own brother. Hours spent busily gathering up driftwood to build a shelter or a fort to play out their imaginary games.

His heart was full and feeling grateful for this moment to share part of his childhood with his boys. Together they lifted up tree limbs that provided

support for all the other wreckage to weave in and out of. Teaching them the art of creating and supporting a structure without the need for modern day tools.

Within two days, their project was complete. Along the way, people stopped to admire their creation, some helping out to gather the ocean's debris and lend their hand, others just inquisitive enough to stop and receive a tour by the boys, proud to show off their accomplishment.

We are seeing more artistic expression in temporary public art displays these days.

For those of us who enjoyed the solitude of Plum Island beach this past winter and came across this structure, know that it was conceived by a Plumislander expressing his unique form of creativity and a yearning to pass on to the next generation the ability to imagine and create from what nature has brought to our shores.

As is the nature of temporary (impermanent) art, its physical presence is limited in time. What is left is the memory of the creative experience and the appreciation of the viewer.



Sandra Turner
Artist/Owner
Plumislander Art
978-519-6353
plumislanderart@gmail.com

NEW STATE LAW FOR CSO ALERTS

Thanks in part to the valiant efforts of our Merrimack River Watershed Council (MRWC), in January 2021, Chapter 322 of the Acts of 2020, "an act promoting awareness of sewage in public waters", was signed. The regulations went into effect in July 2022 and require wastewater treatment facilities to notify the public of sewage discharges and overflows. This includes Combined Sewer Overflows (CSO). CSO plants combine wastewater with storm water runoff that gets discharged into the river because the plants are not designed for the volume that occurs during heavy rainstorms.

There are five public sewer plants (Haverhill, Lawrence, Lowell, Nashua NH and Manchester NH) that have released raw sewage into the Merrimack River after significant rain storms. Raw sewage contains bacteria that can be harmful to both people, pets and wildlife. The new law ensures that the public is notified

CSO continued on page 9

NESC

CREDIT UNION

248 Pleasant Street, Methuen, MA 01844
978-688-8800

CarrStaples&Accardi, CPAs

Certified Public Accountants

Paul Accardi (978) 372-8910

PLUMFEST 2023 - COMING SOON

**MARK YOUR CALENDARS FOR
PLUMFEST 2023 - SATURDAY,
SEPTEMBER 16 FROM 12-6 P.M.**

PlumFest is a non-profit volunteer-run organization incorporated as a Charitable Foundation offering an Island-wide celebration of live music and community by bringing local musicians, island residents and visitors together to showcase the natural beauty and artistry that make Plum Island such a special place. The entire event is free; however, donations are collected to support the ongoing music education program at the Boys and Girls Club of Lower Merrimack Valley. The funds raised will enable the club to expand its existing music curriculum by adding instruction in recording technology, studio engineering and sound management.

Visit www.plumfest.org for more details and information. The PlumFest organizing team is gearing up for this popular event now and needs your support and help with the following:

JUNE 11 FUNDRAISER

- June 11 from 3:00 p.m. to 7:00 p.m. at the Plum Island Beachcoma
- Silent Auction and Raffle -- items donated by local businesses and individuals
- Live Music by Eloise Kirkpatrick opening for The Rolling Who
- 50/50 cash raffle in addition to items raffle
- Fundraiser supports PlumFest operations
- Donations for silent auction and raffle are welcome, please contact: Mary Ellen Powers @ 617.301.0238
Kim Richards @ 978.618.3041

FOCUS ON YOUTH TALENT

- Young musicians and bands are encouraged to sign up for PlumFest
- Tweens, teens, and college kids are welcome to sign up and play
- Music educators are needed to spread the word
- Please see <https://plumfest.org/for-performers/>

VOLUNTEERS

Many volunteers are needed to help on the day of the event. Please sign up at <https://plumfest.org/volunteers/>

Performer and Host registration sign up is open!

Please go to <https://plumfest.org/for-performers/> for more information



September 16, 2023 - 12-6pm
AN ISLAND-WIDE CELEBRATION OF LIVE
MUSIC AND COMMUNITY!



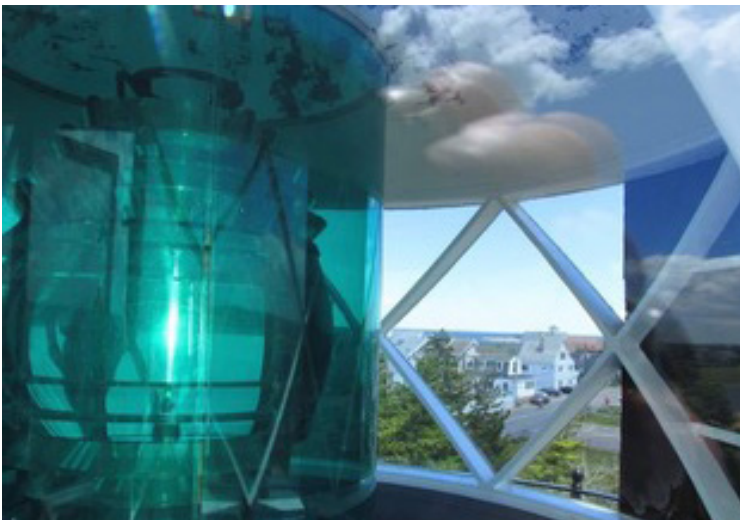
PLUM ISLAND LIGHT UPDATE

Thanks to the Friends of Plum Island Light's new President Jenn Bogard, the Friends have a new website. The Friends mission is to direct and support the preservation, operation, and maintenance of the Newburyport Harbor Light, aka Plum Island Light.

Please visit www.friendsofplumislandlight.org for more information about their upcoming Summer tour season, history of the light, the informational kiosk, newsletters, items for sale (including "the most snugly" PI Lighthouse sweatshirts), and how you can support the organization and its mission. The walkway continues to display beautiful commemorative bricks that you can purchase and have engraved with your special message via the website.

This past winter, the Friends hosted the New England Lighthouse Lovers for a special event and also co-sponsored, along with PITA, an educational event with maritime researcher Jon Johansen at PITA Hall free to the general public. Jon presented Maine Boatbuilders focusing on the Maine lobster boat. The well-attended presentation included photos of builders and boats illustrating their history from the early 1900s to today.

"Photos courtesy of Sandy Tilton... follow her on Instagram or Facebook at Plum Island & Beyond"



RENT PITA HALL

**Weekend Rates Member..\$325 PI Resident Non-Member ..\$375
Non-Member\$450 Commercial\$550**

Weekday Monday-Thursday: \$100 half day / \$200 Full Day

Mercy Meals: Free use of the Hall to Island residents for mercy meals, and recognition of your loved one on the PITA sign.

To rent PITA Hall contact Frank at HallManager@plumislandtaxpayers.org or visit www.plumislandtaxpayers.org to fill out the PITA Hall Rental Agreement.

PLUM ISLAND POINT GAZEBO DEMOLITION

Wondering what happened to the gazebo? In 2005, the much-used and beloved boardwalk and gazebo at Plum Island Point was established by the Plum Island Taxpayers Association (PITA) through a state grant of \$350,000. This boardwalk is the only handicapped accessible path to the Merrimack River in the residential area of Plum Island. It connects people directly to the beach and offers beautiful year-round views of the river mouth and Summer boating traffic. Sadly, the gazebo at the end of the boardwalk was demolished recently.

The Department of Conservation and Recreation (DCR) deemed the gazebo structure unsafe due to severe erosion in the area. Unfortunately, the recent beach nourishment at the Point did not provide sand in this area to secure the gazebo. (See article in this issue: Reservation Terrace and River Dredging Project Update.)

According to Julia Godtfredsen (Newburyport Conservation Commission Administrator), the city hopes the state will replace the gazebo at some point, depending on when and whether the erosion pattern stabilizes. Thanks to Senator Bruce Tarr and PITA President Ron Barrett, this topic will be on the agenda for the next Merrimack River Beach Alliance meeting at PITA Hall (currently scheduled for June 9).



CSO continued

when untreated sewage flows into Massachusetts waters. It's important to note that the Newburyport Wastewater Treatment facility is NOT a CSO design and, thus, does not combine wastewater and storm water.

The regulations also require the Massachusetts Department of Environmental Protection (DEP) to issue an annual report summarizing sewage outfall discharge activity reported for the prior year.

The DEP's first public report on sewer discharges into the Merrimack River and its tributaries (the Concord and Nashua rivers) was recently issued and covers the period from July through December 2022. During that time period (which is only for 6 months and not an entire year), this first annual report states that over 5 million gallons have been released into the Merrimack River from these 5 plants and there were 21 days when sewage discharges occurred. (Statewide, over 1.44 billion gallons were discharged.) Although MA law allows these



CSO continued on page 10

METZYS

CATERING

#MAKEITMETZYSATPITA

TACO BAR

MEAL KITS

COCKTAILS TO-GO

FOOD TRUCK

EVENTS

CONTACT CATERING@METZYS.COM

TO BOOK YOUR NEXT EVENT

METZYS.COM

CSO *continued*

plants to discharge sewage into public waterways, the report also states that “under state and federal laws, all of them are required to eventually end this practice.” To read the DEP report, visit <https://www.mass.gov/doc/2022-sewage-notification-annual-report/download>

In March 2023, the City of Newburyport Board of Health installed five permanent notification signs at public water access points to inform people when a CSO lasts more than two hours or if a CSO can pose a public health risk. These signs have QR codes that you can scan with a cellphone. The codes take you to the city website at www.cityofnewburyport.com for real-time information. The CSO signs are located at Moseley Woods, Cashman Park, the boat ramp adjacent to Tuscan Sea Grill & Bar, the Joppa Flats boat ramp, and Plum Island Beach at the Point. According to Paul Hogg, Newburyport Harbormaster, the signs will give residents, visitors and boaters up-to-date information on water conditions. You can also go directly to the city website for information on CSO postings and to sign up for alerts.

For more information on the MRWC please visit www.merrimack.org

AED AND PUBLIC BATHROOMS UPDATE

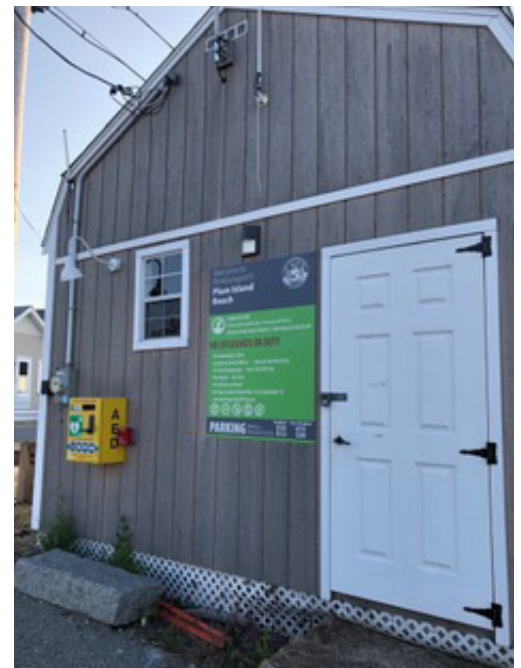


Thanks to Margaret Poppe's drive and determination, we have Automated External Defibrillator (AED) medical devices on Plum Island! There is a device on the Newburyport parking lot attendant's building at the Point and another one at the Center in Newbury. This one was removed temporarily while the new bathroom building at the center was under construction, but it is now back in place.

An AED is used to help someone in sudden cardiac arrest. The AED can analyze the heart's rhythm and deliver a therapeutic dose of electrical energy to the heart muscle to reset the heart's electrical system. It's fairly easy to use with audible and/or visual prompts guiding a user through the

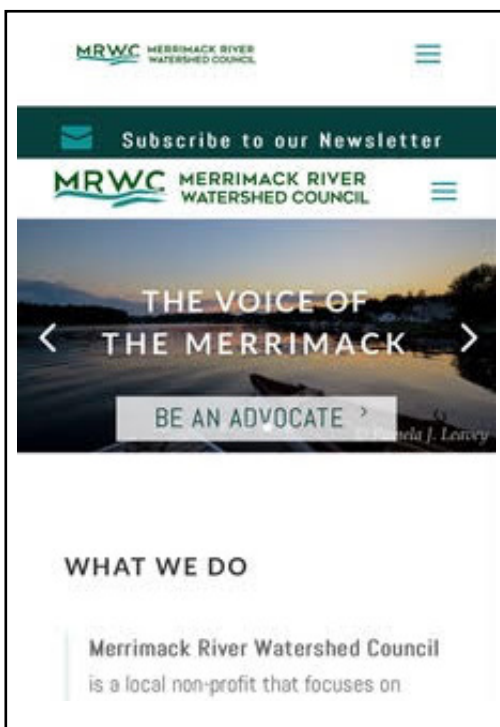
process. To access the device, you simply push the “call button”, which will connect you to the Police Department. They will give you an unlock code to begin the process while first responders are on their way to the scene. After the AED is used, first responders will check the device and ensure it is fully operational for the next emergency.

According to Newburyport Harbor-master Paul Hogg, the public bathrooms at the Point beach parking lot



are open when the lot is staffed. There is also a port-a-potty for after hours. The public bathrooms in Newbury at Plum Island center are still under construction and are expected to open by end of Summer. In the meantime, there will be port-a-potties at the Newbury center beach parking lot.

Please enjoy the beach and remember to follow the posted rules to help keep Plum Island beaches beautiful and clean for all to enjoy. Have a safe and fun Summer!





PLUM ISLAND TAXPAYERS AND ASSOCIATES
8 PLUM ISLAND BOULEVARD, NEWBURY, MASSACHUSETTS 01951

MEMBERSHIP APPLICATION 2023

PLEASE NOTE: You can pay conveniently online via PayPal at <http://www.PlumIslandTaxpayers.org>
Or mail your completed Membership Application and check payment to the PITA at the address above.
We do not sell or publish your membership for any reason.
We will not call your mobile phone or send a text unless there is an island specific need.

Name: _____ Primary Phone: _____

Mailing Address: Street or P.O. Box _____ My E-Mail: _____

City/Town _____

State/Zip Code _____ Please email the PITA Newsletter to me to save printing costs

Plum Island Address: Same as above

Individual Membership: \$35 per year		
Family Membership: \$50 per year	Dues Amount	\$ _____
<i>Please consider additional contributions - any amount will be most appreciated and will be used for Plum Island projects.</i>	Additional Amount for projects:	\$ _____
	Total Amount	\$ _____

I would like to be contacted for PITA volunteer projects: **Yes** **No**

If you like, tell us your special skills or interest for volunteering:

PLEASE COMPLETE THIS MEMBERSHIP BENEFITS SURVEY:

Do you currently participate in the Townsend Energy Buyers Group for PITA members? **Yes** **No**
For Propane? **Yes** **No** For Oil? **Yes** **No**
If NO, would you like to participate in this Buyers Group Program? **Yes** **No**

>> **If Mailing, Please** make your check payable to "PITA" for the correct dues amount plus any additional funds, and your check and fold over your check and put it in the envelope (no staples please)

Office Use: Dues Paid _____ Amount: _____ Check#: _____